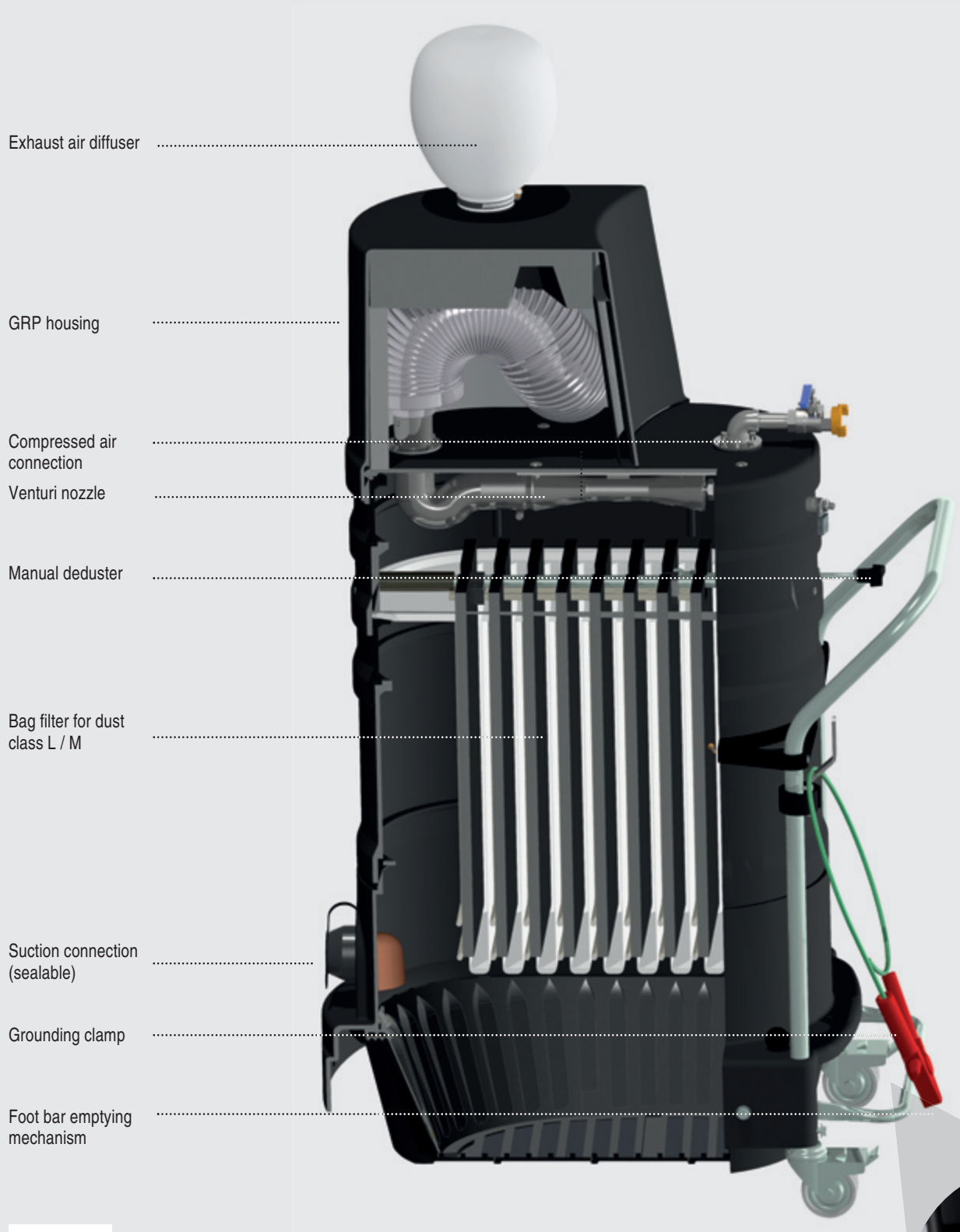


**Industrial vacuum
with pneumatic drive
type R01 P:
Resilient, rugged
and low-maintenance**



Industrial vacuum with pneumatic drive type R01 P



Easy to handle thanks to RUWAC foot bar emptying mechanism

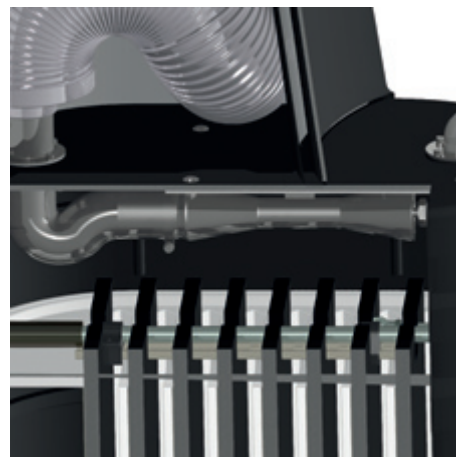


 view film

Resilient, rugged and low-maintenance

- Versions in dust classes L, M and H
 - With earthing clamp
- Designed for 24 hour continuous use
- Compressed air drive in V2A (corrosion-free)
- Versions also designed for explosive gas areas

R01 P022
in explosive
gas areas



Powerful, robust
Venturi nozzle

Technical data

R01 P 000

	1 Venturi nozzle	2 Venturi nozzles
Housing	GRP	GRP
Operating mode	Compressed air	Compressed air
Vacuum (mbar)	-350	-350
Air flow rate (m³/h) (measured with 3 m hose)	255	490
Sound pressure level (dB(A)) (DIN EN ISO 3744)	< 75	approx. 80
Bag filter for dust class L, M (m²)	1.2 / 2.6	2.6
Residual dust filter for dust class H (m²)	3.2	3.2
Height (mm) (Pocket filter 1.2 m² or dust class L, M)	970	–
Height (mm) (Pocket filter 2.6 m² or dust class L, M)	1,223	1,223
Height (mm) (Bag filter 1.2 m² or dust class H)	1,040	–
Height (mm) (Bag filter 2.6 m² for dust class H)	1,380	1,380
Width (mm)	520	520
Length (mm)	850	850
Operating pressure (bar)	5	5
Compressed air consumption (m³)	175	350
Venturi nozzles (pc.)	1	2
Drive	Injektor Venturi	Injektor Venturi
GeKa connection (inches)	1/2	1
Capacity (litres)	35	35
Suction connection (mm)	50 / 70	50 / 70

Choice of disposal systems



Ruwac
Industriesauger



Ruwac
Industriesauger GmbH
Westhoyeler Str. 25
49328 Melle

+49 (0) 52 26 - 98 30-0
www.ruwac.de
ruwac@ruwac.de

Industrial vacuum cleaners are available in explosion-proof versions in accordance with ATEX 2014/34/EU.



2014/34/EU

DIN EN 60335-2-69, Ann. AA

14-1070-002-01.2021